

Seamless Flow of Data from Design to Production, AccuMark® Brings it all Together

ACCUMARK OFFERS THE INDUSTRY'S MOST ROBUST PATTERN DESIGN, GRADING, MARKER MAKING AND PRODUCTION PLANNING FUNCTIONALITY TO HELP AUTOMATE THE TASKS YOU PERFORM EVERY DAY.

WHEN IT COMES TO REDUCING COSTS AND UPHOLDING BRAND QUALITY, ACCUMARK DELIVERS A SIGNIFICANT COMPETITIVE ADVANTAGE. WITH POWERFUL QUALITY CONTROL, COMMUNICATION AND TIME-SAVING FUNCTIONS, BRAND OWNERS AND MANUFACTURERS REALIZE REDUCED LABOR AND RAW MATERIAL COSTS, GENERATE FEWER SAMPLES AND PROTOTYPES, AND UPHOLD EVEN THE MOST STRINGENT QUALITY AND BRAND GUIDELINES.

Accelerate pattern design.

- Create double notch placement and notch multiple pieces at once to quickly indicate piece matching. Turn notch shape display on and off for easy viewing of notch shapes applied to patterns.
- Place, edit and grade images to your pattern pieces to drive your digital printing process.
- Rely on the bookmarking feature to track original pattern and compare revisions.
- Walk pattern pieces on screen using either internal or finished edge to ensure notch placement and proper sewing.
- Prepare production patterns with easy-to-apply seam finishes.
- Creating costing markers right in Pattern Design in a variety of fabric widths for quick estimates.
- Dart, pleat, and fullness functions allow you to create complex styles, make changes easily and do advanced editing.
- An enhanced explorer preview pane allows users to see pattern labels and edge finishes and allows models to be sorted by fabric types.
- Use the power of Batch Processing for production operations like nesting and print file generation.
- Create your Bill of Materials directly from patterns and share with your product lifecycle management (PLM) software.

Simplify grading.

- Use multi-dimensional grading as an easier alternative to alterations.
- Proportional grading function added for quick grade capability.
- Improved bookmark functionality allows users to revert to previous grading by saving both the graded nest of the pattern as well as the perimeter shape.
- Reference existing grade rule libraries to quickly grade patterns.
- Grading updates automatically as pattern changes are made, eliminating the need to re-grade pieces after modifications.
- Share graded measure charts directly to PLM.
- With pre-saved size code tables and alteration rules, AccuMark creates made-to-measure garments from basic sizes.

Accelerate marker making and maximize material utilization.

- Easily generate markers with required production quantities, material widths, fabrics, colors and sizes.
- Import orders from your ERP system and process automatically with Batch Processing.
- Automatically add splice marks to markers to assist during the spreading process.
- Generate digital print files directly from AccuMark markers and pieces.



info@csime.ae
sales@csime.ae



+971501771674
+971562544504

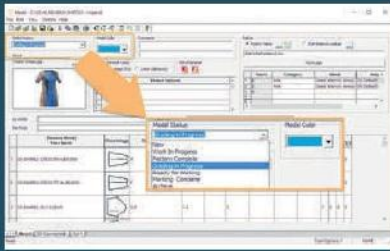
GERBER
ACCUMARK



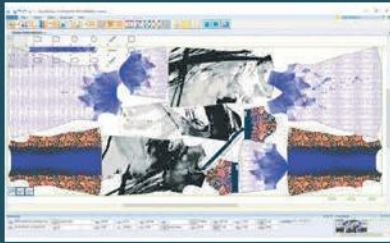
Your Machinery Partner

CSI MIDDLE EAST LLC SHARJAH

سى اس آى ميديل ايست ذ م م الشارقة



Add model status and color to identify production standing.



Output files directly from Easy Marking to digital fabric printers for on-demand manufacturing.

- Track critical information like material utilization and costs in all stages of production.
- Capitalize on your existing library of markers to accelerate piece placement in markers.
- Enter fabric weight to calculate material costs more accurately, particularly with knit fabric.

Enhance communication with colleagues and suppliers.

- Track models according to production status with newly added Model Status Field in the Model Editor.
- Import and export reports seamlessly with Excel and other standard formats.
- Easily identify when multiple models are in PDS work area or marker making area with color fill.
- Automatically calculate total cost and sum of all costs with new cost and quantity fields available in BOM.
- Enhanced fabric tables offer customizable fields and common fields between other Gerber products.
- Get customized Piece, Model and Marker reports with an easy-to-use report interface.
- Take the guesswork out of converting files of unknown origin with automatic detection of DXF format and guidance for conversion.

- By integrating information between AccuMark and Gerber's spreading and cutting systems, users significantly improve productivity in the cutting room and reduce errors caused by manual data entry.
- AccuMark generates a barcode or QR code that contains the file name, material type and color, and number of plies needed for the spread. Spreader and cutter operators can then easily scan the code to locate the correct file to be spread and cut.
- Transfer pattern and marker data to Gerber's YuniquePLM[®] product lifecycle management software or your ERP system.
- Harness greater flexibility to import non-AccuMark file formats.
- Customize and export reports in standard formats such as Microsoft[®] Excel[®].
- Share a work session with other AccuMark users to easily communicate pattern changes and style information.
- Quickly create images of patterns and markers to use in tech packs.
- Add annotation to individual pieces in any language to visually communicate pattern details.





Your Machinery Partner

CSI MIDDLE EAST LLC SHARJAH

سى اس آى ميديل ايست ذ م م الشارقة

GERBER ACCUMARK



info@csime.ae
sales@csime.ae



+971501771674
+971562544504

Optional Hardware Components.

Plotters

GERBERplotter™ series high-speed inkjet plotters.

- Supports plot widths up to 220 cm (88 in.).

Digitizing Workstations

GERBERdigitizer™ with 16-button cursor

- Table size: 111.5 x 152 cm (44 x 60 in.).
- Supports input of pieces up to 220 x 1350 cm (86 x 531 in.).
- Serial connection required.

Silhouette™ Table

- Table size: 123 x 167.5 cm (49 x 66 in.).
- Supports input of pieces up to 220 x 1350 cm (86 x 531 in.).
- Serial connection required.

Optional Software Components.

- AccuNest™ automatic marker making software.
- AccuScan™ automated pattern digitizing software.
- AccuPlan™ automated cut planning software.
- AccuMark 3D visualization software.
- AccuMark Made-to-Measure software.

Supported Operating Systems.

- Windows® 10 Professional and Enterprise. **64-bit only.**
- Microsoft Office, 64-bit version, required for files that interact with AccuMark (example Measurement Charts).

AccuMark 12 New Features and Upgrades.

Efficiency Improvements.

- Multi-dimensional and proportional grading added to simplify the grading process.
- Enhanced wizard functionality to include advanced features such as component scripts.
- Drag and drop images onto patterns for quick placement.
- Support for PDF image type to maintain color accuracy with spot colors.

Workflow Improvements.

- Enhanced Bookmark Functionality to include grading.
- Copy and Paste pieces between work areas in Pattern Design for quick validation.
- Import multiple zip files to increase efficiency in data management.
- With the power of a Windows 10 64-bit application, AccuMark 12.2 can generate digital print files with higher resolution graphics and overall larger image size.

Communication Advancements.

- Millimeter notation available throughout system.
- Barcode and QR codes available for cut generation and digital printing.
- Reports can be customized to fit user requirements.

Visual Enhancements.

- Add model status and color to models for easy tracking and identification.
- Display Notch Shapes in PDS for quick reference.
- Display pattern labels, edge finishes, and notch shapes now available in AccuMark Explorer preview pane.

System requirements

	Minimum	Recommended
Processor Speed	Intel® Core™ i-5 -3550S 3.7 GHz or higher	Intel Core 2400 3.1 GHz or higher
Hard Disk Capacity	120+ GB	240+ GB (SSD)
Memory	8+ GB	16+ GB
Ports	USB	USB
Service Packs	Current	Current

