



SALES/SPARES/SUPPORT



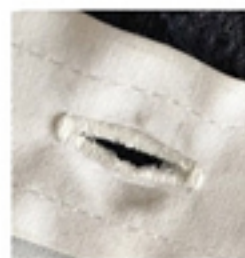
sales@csime.ae
info@csime.ae



+971 50 17 71674
+971 56 25 44504

S-1790D

DIRECT DRIVE PROGRAMABLE
STRAIGHT BUTTON HOLE SEWING MACHINE



Description:-

1. Maximum speed reaches 4200rpm
2. The trimming devices are controlled by the individual step motor, which enable to adjust the motion of knife according to the actual condition.
3. With the adjustment of tension solenoid. It is possible to meet the needs of different tension at the parallel part and bartack part of buttonhole.
4. With LCD displayer, touch panel operation, the entire works of data setting, pattern editing and modification can be done via the operating board. The operating board also supports the most used USB connector for transferring patterns and updating the program.
5. The system supports 30 patterns with different shapes and the format of patterns generated pattern-making software.
6. Additionally, the capacity can expand to 99 patterns, which can be selected and edited via the operating board freely.

Sakura-Stitch
Industrial Sewing Machine

